



66 Clover Grove  
Leekbrook



Estate Agents. Valuers. Auctioneers. Chartered Surveyors  
Part of the Bagshaws Partnership



## 66 Clover Grove

Leekbrook  
Staffordshire  
ST13 7AS

- \* A two bed roomed second floor apartment located on the very popular Wardle Gardens development just on the outskirts of the town.
- \* Well presented accommodation that benefits from Upvc double glazing and gas fired central heating.
- \* The apartment briefly comprises: Entrance Hall, Lounge / Kitchen Area, Two Bedroom and Bathroom.
- \* Allocated parking space.
- \* The property may be of interest to landlords or first time buyers looking to get on the housing ladder.
- \* Offered For Sale with No Upward Chain involved.



Offers In The Region Of £107,000



2



1



1



C



Leek - 01538 383344



leek@buryandhilton.co.uk





# General Information

## Entrance Hall

Radiator. Storage cupboard.

## Lounge 13'6" x 10'11" (4.14m x 3.33m)

Radiator.

## Kitchen 10'4" x 8'5" (3.15m x 2.57m)

Wall and base units. Stainless steel sink unit with drainer and rinser bowl. Electric hob and oven with extractor unit above. Plumbing point. Cupboard housing central heating boiler.

## Bedroom 12'4" x 10'0" (3.78m x 3.07m)

Radiator. Storage cupboard x 2.

## Bedroom 11'5" x 8'7" (3.48m x 2.64m)

Radiator.

## Bathroom

Bath with feeder shower. W.c. Wash basin. Radiator.

## Outside

Allocated parking and visitor parking.

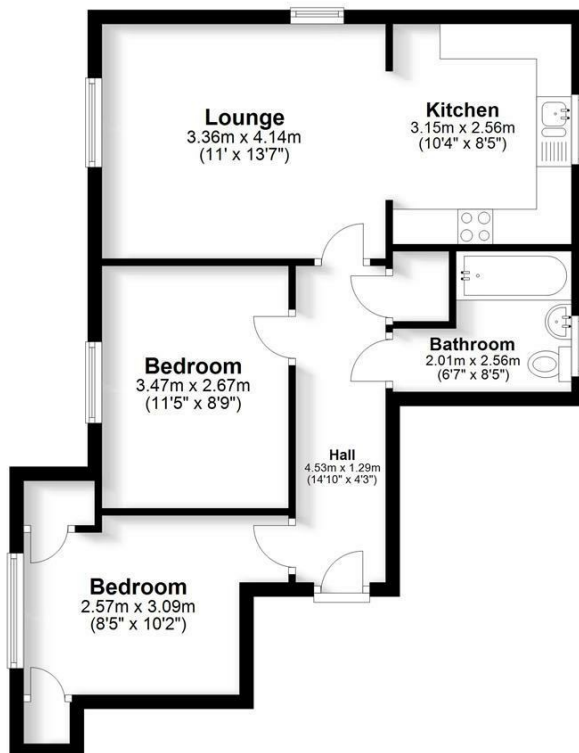
## Viewing

By prior appointment through the Agents.



## Ground Floor

Approx. 53.8 sq. metres (579.0 sq. feet)



Total area: approx. 53.8 sq. metres (579.0 sq. feet)

Plan produced by [www.firstpropertyservices.co.uk](http://www.firstpropertyservices.co.uk). We accept no responsibility for any mistake or inaccuracy contained within the floorplan. The floorplan is provided as a guide and should be taken as an illustration only. The measurements, contents and positioning are approximations only and provided as a guidance tool and not an exact replication of the property. Plan produced using PlanUp.

## Agents Notes

Bury & Hilton have made every reasonable effort to ensure these details offer an accurate and fair description of the property. The particulars are produced in good faith, for guidance only and do not constitute or form an offer or part of the contract for sale. Bury & Hilton and their employees are not authorised to give any warranties or representations in relation to the sale and give notice that all plans, measurements, distances, areas and any other details referred to are approximate and based on information available at the time of printing.

**BURY & HILTON**  
ESTD 1963  
Part of the Bagshaws Partnership

6 Market Street, Leek, Staffordshire, ST13 6HZ

T: 01538 383344

E: [leek@buryandhilton.co.uk](mailto:leek@buryandhilton.co.uk)

[www.buryandhilton.co.uk](http://www.buryandhilton.co.uk)

Part of the Bagshaws Partnership

**BAGSHAWS**  
ESTD 1871  
Land · Property · Livestock

## Offices in:

Ashbourne	01335 342201
Bakewell	01629 812777
Buxton	01298 27524
Leek	01538 383344
Penkridge	01785 716600
Uttoxeter	01889 562811

arla | [propertymark](http://propertymark.co.uk)

